



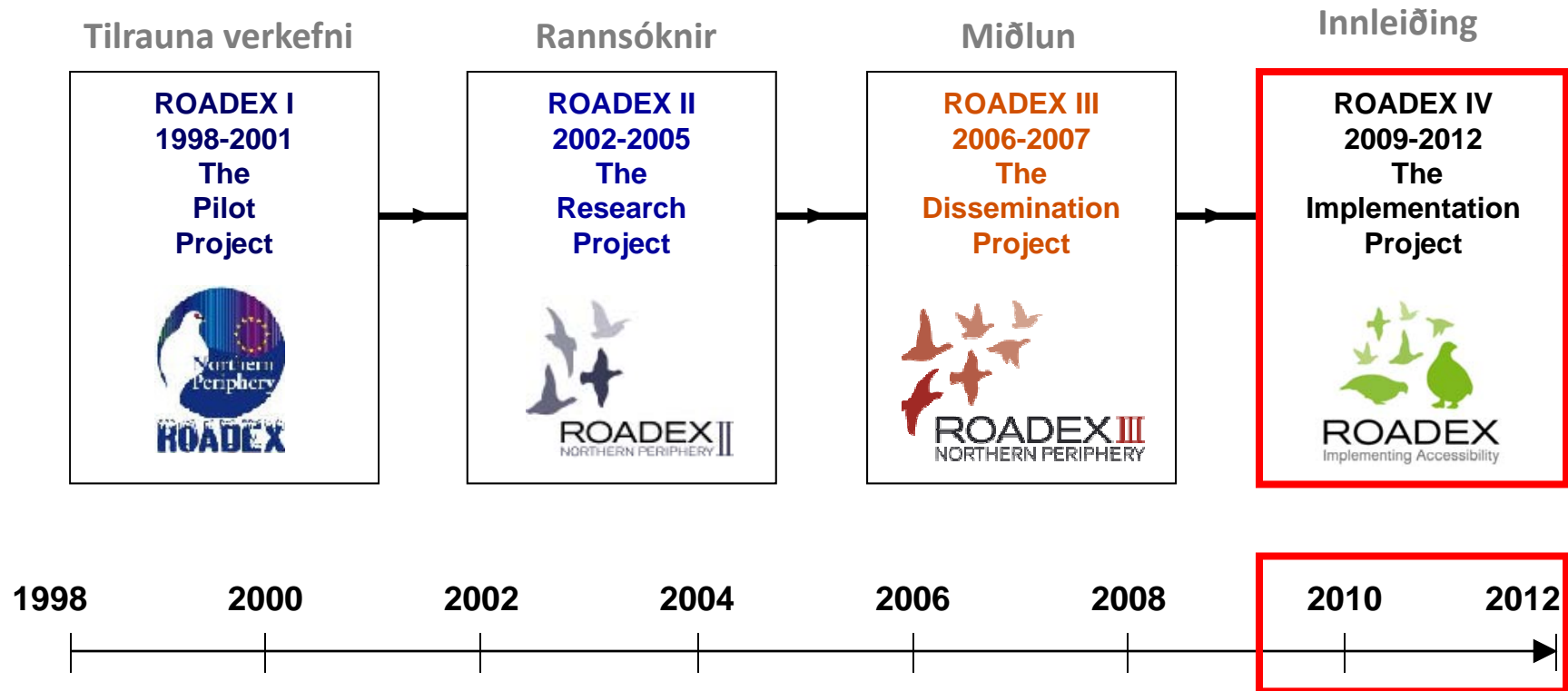
ROADEX

Innleiðing

Norðurslóðaáætlun EU



ROADEX 1998 - 2012:



Aðilar að ROADEX samstarfinu:



Lead Partner, The Swedish Transport Administration
Northern Region, The Swedish Forest Agency



TRAFIKVERKET



Skogsvårdsstyrelsen
DALARNA – GÄVLEBORG



Centre for Economic Development, Transport and the
Environment, Lapland, Keski-Suomi and Savo Karelia regio



Centre for Economic Development,
Transport and the Environment



The Government of Greenland



The Icelandic Road Administration



The Northern Region, Norwegian Public Roads Administration



The Highland Council, Forest Enterprise,
Comhairle Nan Eilean Siar



Forest Enterprise



National Roads Authority,
Department of Transport, Ireland



Comhairle Nan Eilean Siar
Environment, Heritage and Local Government



Associate Partner:
The Forest Engineering Research Institute of Canada, (FERIC)



Tölulegar staðreyndir

13 aðilar standa að verkefninu
7 lönd

3 ár Júlí 2009 – Júní 2012



Fjármagn samtals: 2,163,473 Euro 335.338.318,- Ikr.

EU-framlag (55%): 1,194,205 Euro 185.101.775,- Ikr.

MARKMIÐIÐ

Er að stuðla að almennri notkun á ROADEX nýjungum og tækni á Norðurslóðasvæðinu.

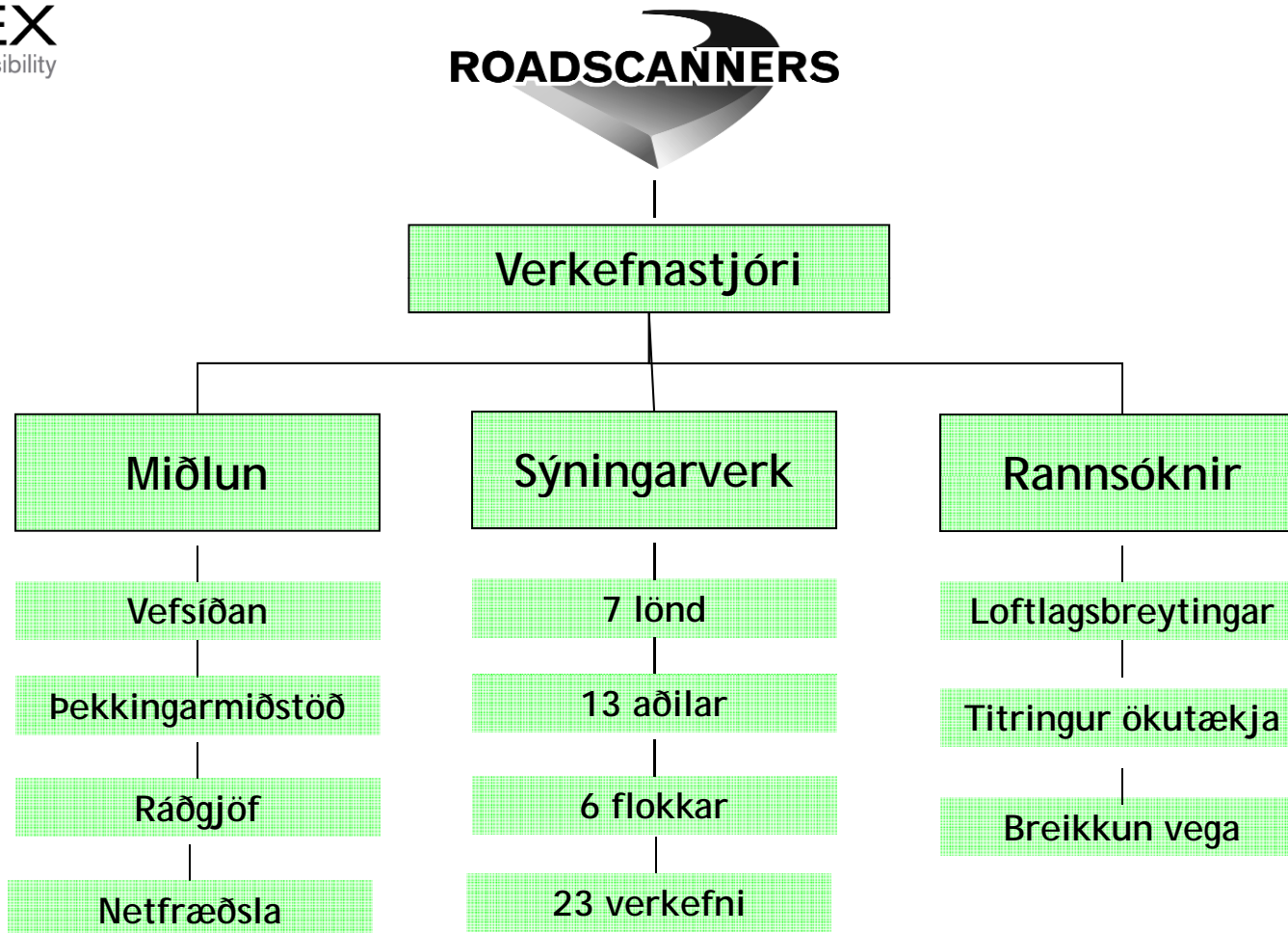
Fjallað er um umferðarlitla opinbera vegi, skógar- og aðra iðnaðarvegi og einkavegi.

Sérstök áhersla er lögð á áhrif frá loftlagsbreytingum og umhverfissjónarmið.





Uppbygging ROADEX IV

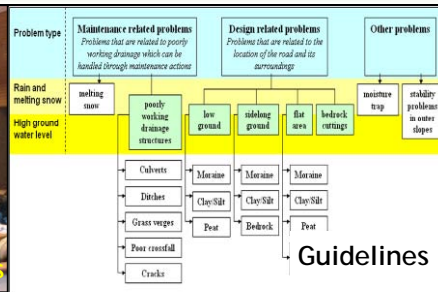


www.roadex.org





Seminars



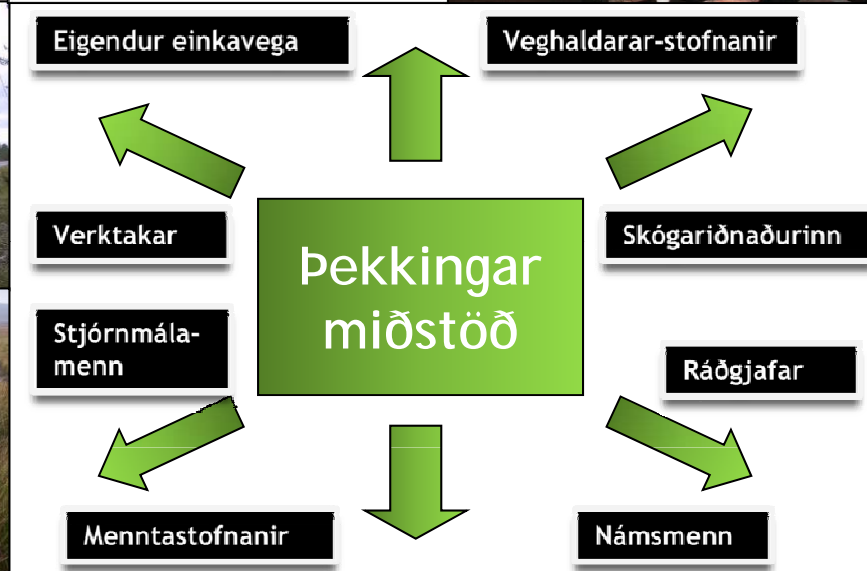
Workshops



Publicity



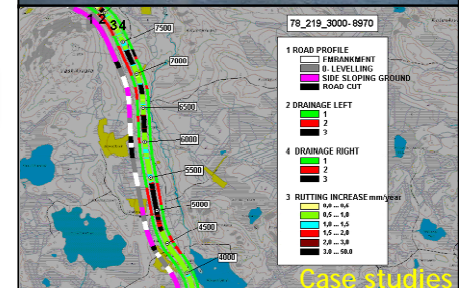
New technologies



Surveys



New materials



Case studies



Conferences



Environmental issues



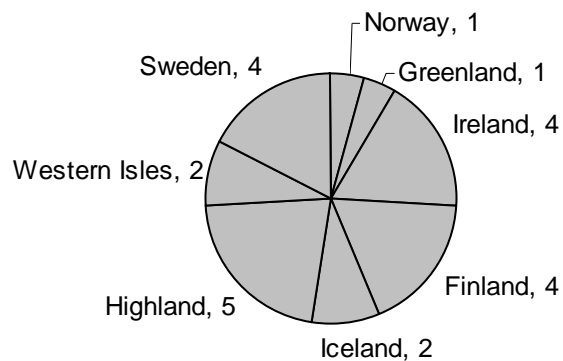
Demonstration projects



Local briefings

Sýningarverkefni

- 7 lönd
- 13 aðilar
- 6 efnisflokkar
- 23 verkefni



Skipting milli aðila

No	Location	Description
1	Greenland	Drainage maintenance guidelines - to be managed by Dr Timo Saarenketo of Roadscanners Oy, author of the ROADEX drainage reports
2	Ireland	
3	Finland	
4	Iceland	
5	Highland	
6	Western Isles	
7	Sweden	
8	Finland	Road friendly vehicles and CTI - to be managed by Professor Pauli Kolisoja of the Tampere University of Technology, author of the ROADEX report on permanent deformation.
9	Highland	
10	Sweden	
11	Ireland	Forest Road management and maintenance policies - to be managed by Svante Johansson of Roadscanners AB, author of the ROADEX reports and policies on the socio-economic impacts of low volume roads.
12	Highland	
13	Sweden	
14	Finland	Rutting, from theory to practice - to be managed by Professor Pauli Kolisoja of the Tampere University of Technology, author of the ROADEX report on permanent deformation.
15	Iceland	
16	Highland	
17	Western Isles	
18	Sweden	
19	Kerry	
20	Donegal	
21	Finland	Analysis of health problems due to vibration - to be managed Johan Granlund, Vectura Consulting AB, author of the ROADEX III Task B report "Health Issues Raised by Poorly Maintained Road Networks"
22	Norway	
23	Highland	



• Staðsetning sýningarverkefna

Verkefnastaða 1. nóvember 2010

- Almennt á áætlun
- Vefsíðan virk og uppfærð
- Þekkingarmiðstöðin sett upp
- Wikipedia síða
- ROADEX ráðgjafaverkefni
- Sýningarverkefni komin í gang
- Vegir á mýrlendi, verkefni að hefjast
- 4 Ráðstefnur 2 námsstefnur
- Útgáfa og kynning

Description	2009				2010												2011												2012										
	9	10	11	12	1	2	3	4	5	6	7	8	9	10	11	12	1	2	3	4	5	6	7	8	9	10	11	12	1	2	3	4	5	6					
WP1 Project Management																																							
M2 Project management																																							
WP2 Consultancy Service & Knowledge Centre																																							
C2 Website																																							
C2 Knowledge Centre																																							
C3 Consultancy Service																																							
WP3 Local demonstration projects																																							
D1 Drainage maintenance																																							
- Project design																																							
- Demonstrations																																							
- Monitoring																																							
- Reporting																																							
D2 Road friendly vehicles																																							
- Setting up project																																							
- Demonstrations																																							
- Reporting																																							
D3 Forest Road Management																																							
- Setting up project																																							
- Demonstrations																																							
- Monitoring																																							
- Reporting																																							
D4 Rutting design																																							
- Setting up project																																							
- Demonstrations																																							
- Monitoring																																							
- Reporting																																							
D5 Roads on Peat																																							
- Setting up project																																							
- Demonstrations																																							
- Monitoring																																							
- Reporting																																							
D6 Vibration & Health																																							
- Setting up project																																							
- Demonstrations																																							
- Monitoring																																							
- Reporting																																							
WP4 eLearning																																							
- Project design																																							
- User interface design																																							
- Writing manuscripts																																							
- Manuscript translations																																							
- Final elearning																																							
WP5 Research Projects																																							
Climate Change																																							
- Setting up																																							
- Research phase																																							
- Report																																							
Widening of roads																																							
- Setting up																																							
- Research phase																																							
- Report																																							
Road Standards & Health																																							
- Setting up																																							
- Research phase																																							
- Report																																							
Final reports																																							
Close Project																																							



Loftslagsbreytingar og áhrif þeirra á vegakerfið



Sérstök áhersluatriði:

- Hvernig á að bregðast við loftslagsbreytingum.
- Leiðbeiningar
- Viðmiðunarreglur

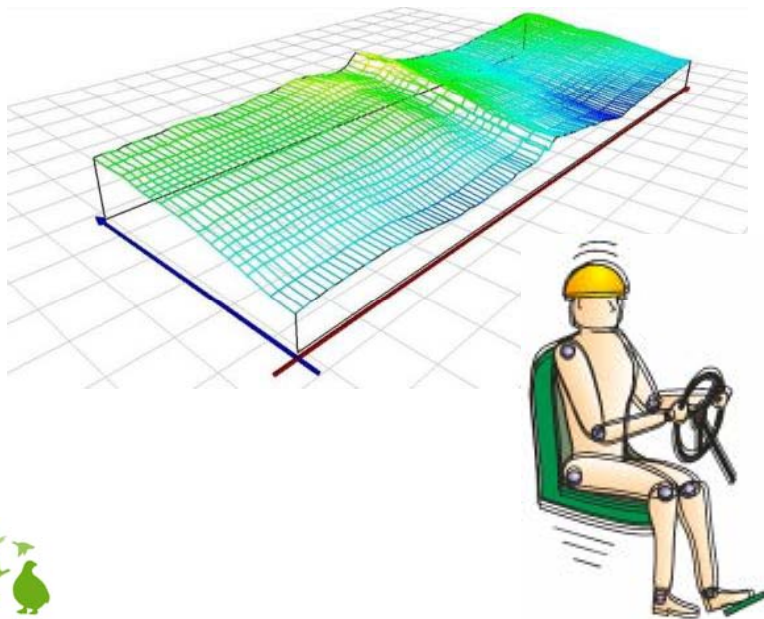


Titringur ökutækis og ökumanns

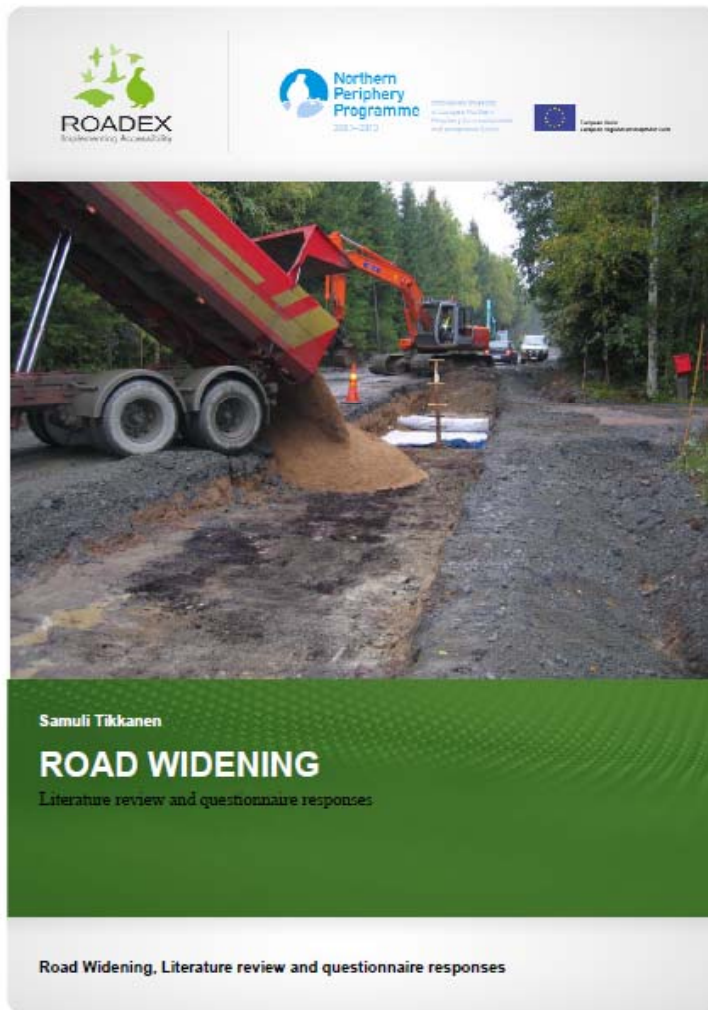


Sérstök áhersluatriði

- Viðhaldsstaðlar, áhrif mismunandi sveiflu og titrings
- Sumar- og vetrarsveifla á sömu vegum bornin saman, A (8) skv. tilskipun EU **Directive 2002/44/EC** $< 0,5 \text{ m/sek}^2$
- CTI kerfi og sveifla – erum við að mæla réttar breytistærðir.



Breikkun vega



Sérstök áhersluatriði

Hvers vegna sumar breikkanir klikka og aðrar ekki.

Nýjasta tækni við ástandsmat vega

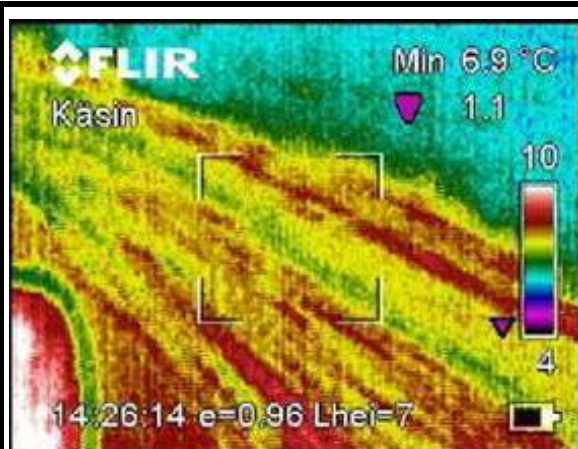
- 3d GPR tækni
- Háskerpu IR tækni

Niðurstaða

- Nýjar tillögur að verklagsreglum fyrir breikkun vega.

Niðurstaða könnunar á fyrirliggjandi gögnum og útsendum spurningarlista liggur fyrir

Sýningarverkefni - sex efnisflokkar



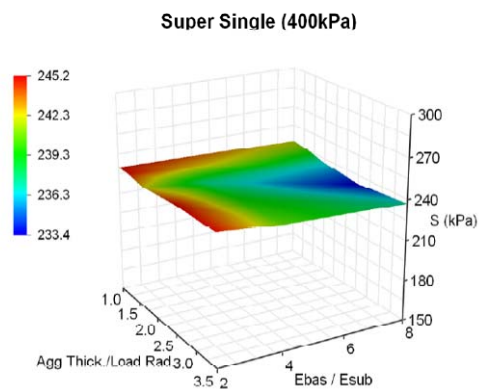
Afvötnun vega - viðhald
Timo Saarenketo



Vegvæn ökutæki & TPC
Pauli Kolisoja



Skógarvegir
Svante Johansson



Hönnun uppbyggingar
Pauli Kolisoja




Vegir um mýrlendi
Ron Munro/
Haraldur Sigursteinsson



Áhrif titrings á ökumenn
Johan Granlund

ROADEX vefsíðan: www.roadex.org

Latest News: 15.07.2010. ROADEX meets FPInnovations. Scotland, Finland and Sweden were happy to host TPCS expert Al Bradley of FPL... more.



ROADEX
Implementing Accessibility

ROADEX Services


The ROADEX Project offers a number of services to its Partner organisations to support the continual improvement of the organisations and the rural road networks they manage.

- Home
- About Us
- Background
- ROADEX Services
- Consultancy
- The ROADEX Knowledge Centre
- The Partner Knowledge Bank
- Demonstration Projects
- Research Projects
- ROADEX E-Learning
- News
- Contacts

The ROADEX Consultancy Service

A consultancy service to support the in-house teams in the application of ROADEX technologies


[Continue](#)



The ROADEX Knowledge Centre

The place where all published ROADEX publications and media can be accessed


[Continue](#)




The Partner Knowledge Bank

The Partner area of the website where Partners can share in-house information on low volume roads

[Continue](#)



THIS PROJECT IS BEING PART-FINANCED BY EUROPEAN UNION EUROPEAN REGIONAL DEVELOPMENT FUND



Northern Periphery Programme
2007-2014

Vefsíða / samskiptaflötur-margir til margra

Extranet Login Username Password Login Search

Latest News: 13 August 2008. After being hosted for a few months on a temporary web site the e-learning package is now running directly from the ROADEX web site's server.

Welcome to the ROADEX web site

The site provides your gateway to the ROADEX network, research, published information, the partners and people involved in the project. The site is being added to regularly as information becomes available. We appreciate any feedback or suggestions for improvement.

Home

- ROADEX III
- ROADEX II
- ROADEX
- Publications
- News
- Description
- Roadex Network
- Eu Agendas
- Partners
- Links
- Feedback/requests
- Search

E-Learning

Consultancy and Knowledge Centre

ROADEX project

ROADEX was born in 1998 in the form of a "pilot" project with the aim of: "Creating effective technical exchange & co-operation between road districts in the Northern Periphery of Europe."

[Read More](#)

E-learning

An extension of the e-learning project. This permits the production of additional educational material and graphics to make the package more complete and attractive to users.

[Continue](#)

Consultancy and Knowledge Centre

The consultancy and knowledge centre will work as an external application under the ROADEX website for both the users and the developers to discuss and develop the everyday solutions and working methods further.

[Read More](#)

© ROADEX 2001-2006. All Rights Reserved. Contact Webmaster

Net-fræðsla á sex tungumálum / framsetning

Extranet Login Username Password Login Search

Latest News: 13 August 2008. After being hosted for a few months on a temporary web site the e-learning package is now running directly from the ROADEX web site's server.

ROADEX
Implementing Accessibility

E-Learning

An extension of the e-learning project. This permits the production of additional educational material and graphics to make the package more complete and attractive to users.

Home

E-Learning

- Lesson 1 Permanent Deformation
- Lesson 2 Road Construction Over Peat
- Lesson 3 Drainage of Roads
- Lesson 4 Environmental Considerations for Low Volume Roads

Consultancy and Knowledge Centre

Lesson 1
Permanent Deformation
The importance of the road network to a society can be compared with the vascular system of a human body.
[Continue](#) [Download Lesson 1](#) 4.1MB

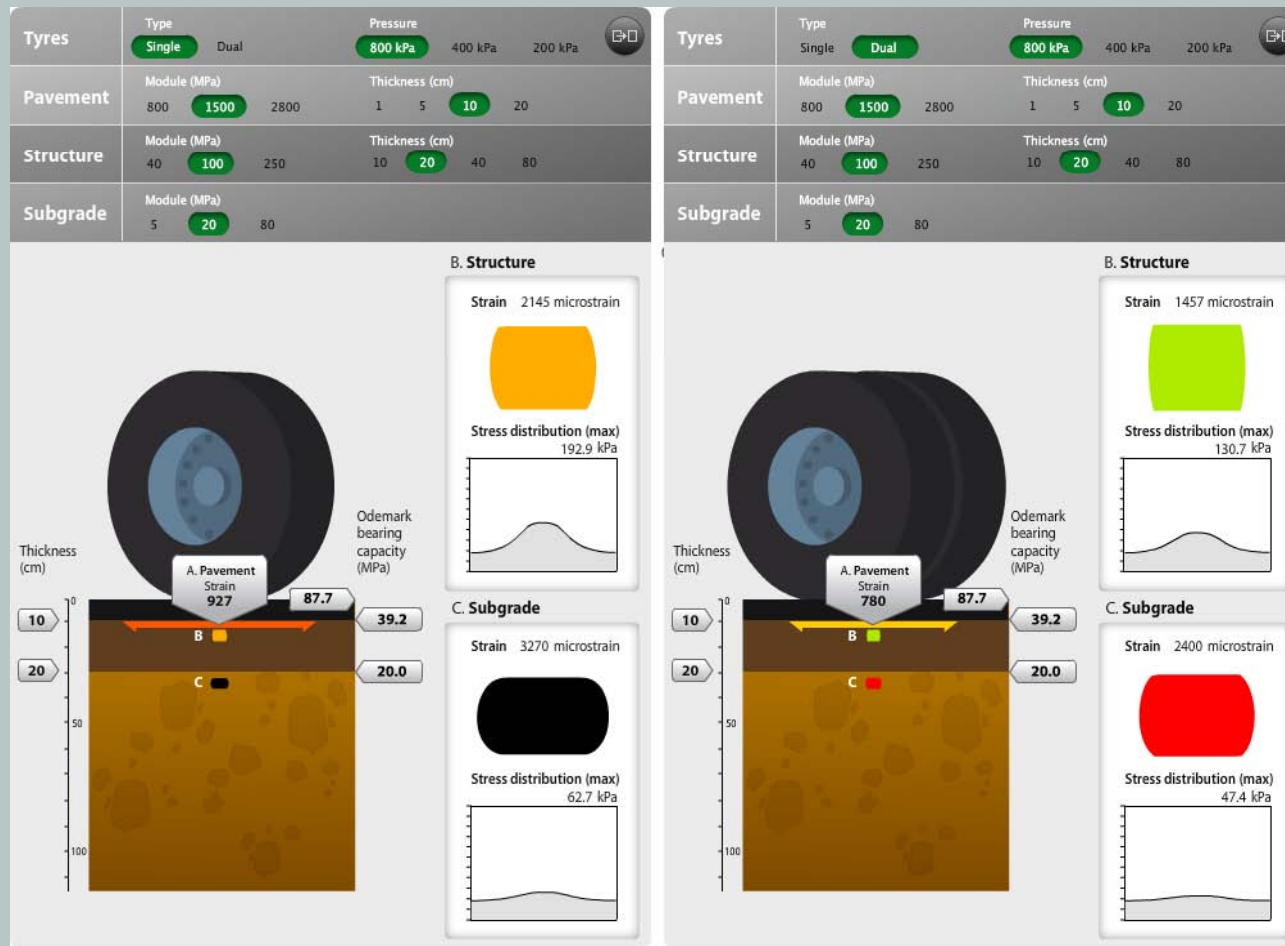
Lesson 2
Road Construction Over Peat
The importance of the road network to a society can be compared with the vascular system of a human body.
[Continue](#) [Download Lesson 2](#) 4.1MB

Lesson 3
Drainage of Roads
The importance of the road network to a society can be compared with the vascular system of a human body.
[Continue](#) [Download Lesson 3](#) 4.1MB

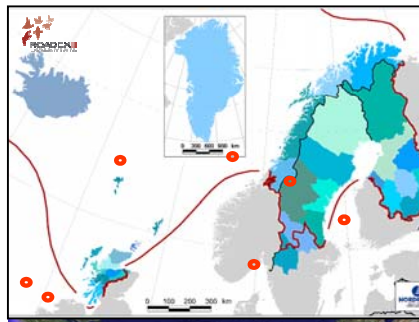
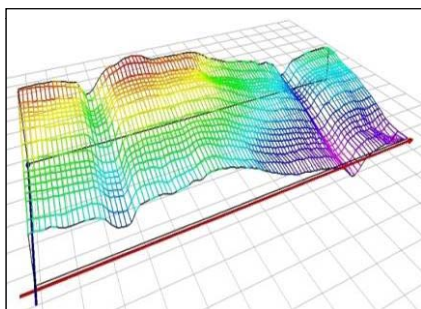
Lesson 4
Environmental Considerations for Low Volume Roads
The importance of the road network to a society can be compared with the vascular system of a human body.
[Continue](#) [Download Lesson 4](#) 4.1MB

© ROADEX 2001-2006. All Rights Reserved. Contact Webmaster

Hönnun uppbyggingar - samanburðareikningar



ROADEX verkefnið:



www.roadex.org



ROADEX

Implementing Accessibility

Takk fyrir !