



Reykjavíkurborg



MANNVIT
VERKFRÆÐISTOFA

AÐREINAR OG FRÁREINAR - SLYSATÍÐNI

Miklabraut milli Skeiðarvogs og Lönguhlíðar



Rannsóknarráðstefna Vegagerðarinnar 2010
Þorsteinn R. Hermannsson
Grétar Þór Ævarsson

Inngangur

- Sérrein fyrir umferð til vesturs milli Kringlu og Lönguhlíðar (2005)
- Sérrein framlengd að Skeiðarvogi (2008)
- Sérrein fyrir umferð til austurs frá Stakkahlíð að Kringlum. (2009)
- Breyttar aðstæður með tilkomu sérreina þar sem ökumenn á leið af eða á Miklubraut þvera sérrein



Inngangur

Tilgangur rannsóknar:

- Að kanna áhrif sérreina á slysatíðni á aðreinum og fráreinum
- Læra af reynslunni og setja fram tillögur að úrbótum sem nýtast þegar sérreinum fjölga



Aðferðafræði

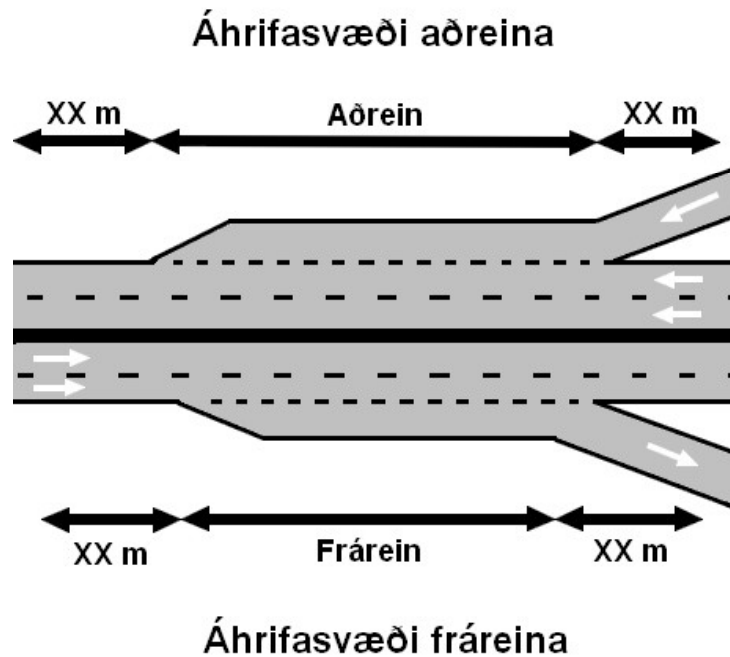
- Gögn frá RVK og US – Rannsóknartímabilið 2004-2009.
- Slysaskráningu 2008 ábótavant
- Slysátíðni = fjöldi slysa á hver milljón ökutæki

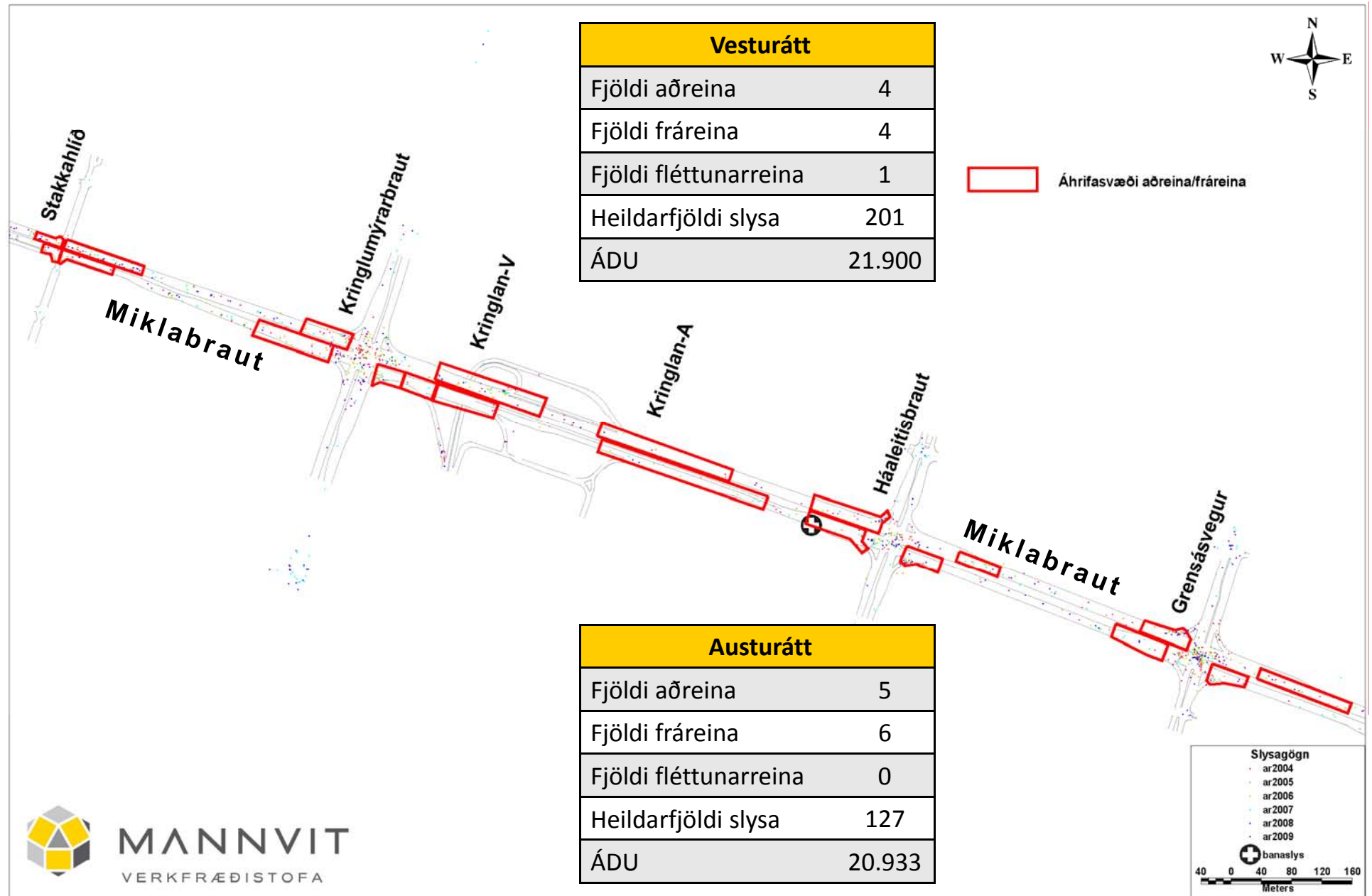
$$Slysátíðni_{raun} = \frac{Fjöldi slysa}{Fjöldi ökutækja sem aka inn í gatnamót (ÁDU) \times 365} \times 10^6$$



Aðferðafræði


- Áhrifasvæði
- Öll slys innan áhrifasvæða meðtalin





Vesturátt

Fjöldi aðreina	4
Fjöldi fráreina	4
Fjöldi fléttunarreina	1
Heildarfjöldi slysa	201
ÁDU	21.900


 Áhrifasvæði aðreina/fráreina

Asturátt

Fjöldi aðreina	5
Fjöldi fráreina	6
Fjöldi fléttunarreina	0
Heildarfjöldi slysa	127
ÁDU	20.933

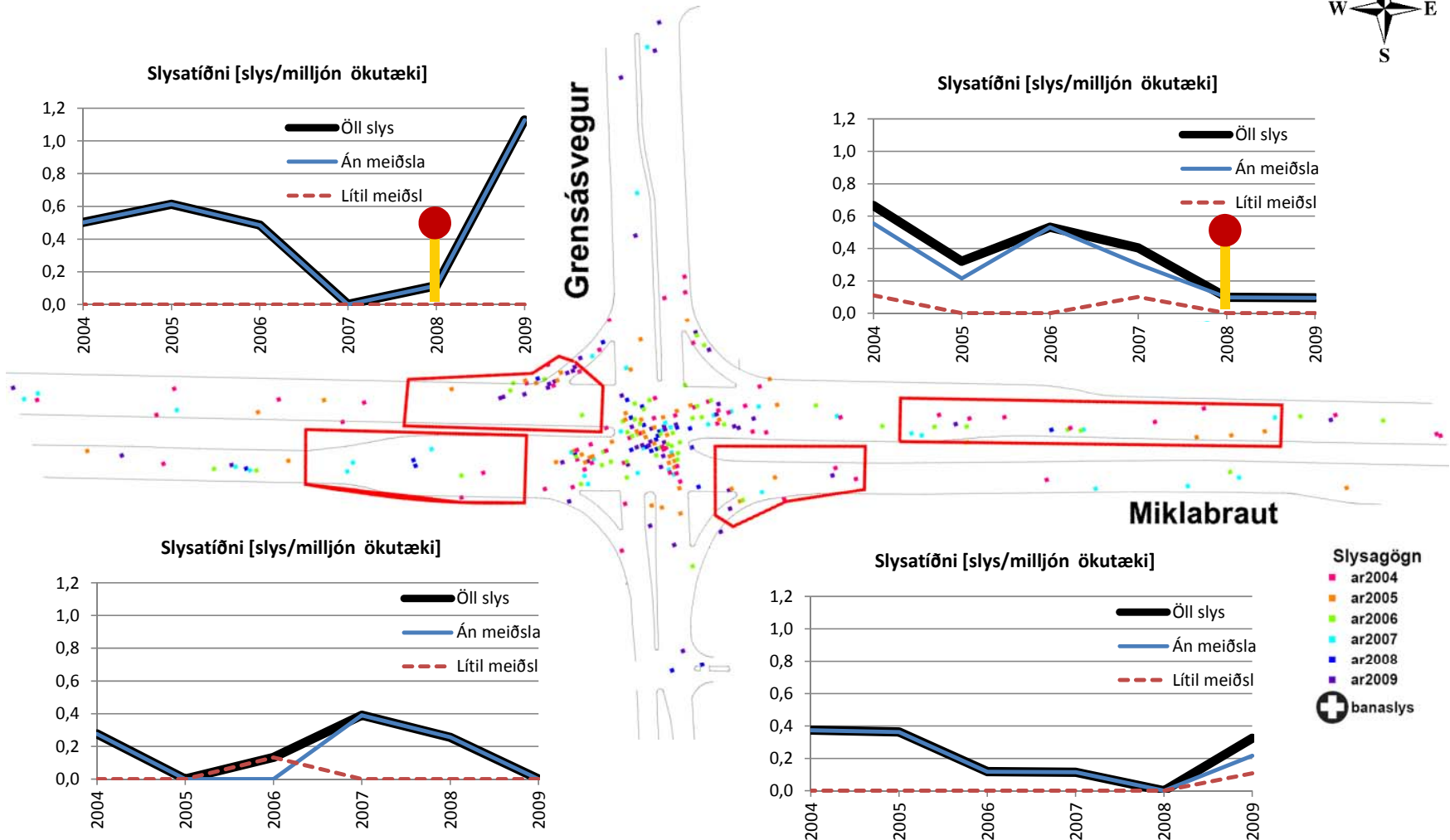
Slysaögn


- ar 2004
- ar 2005
- ar 2006
- ar 2007
- ar 2008
- ar 2009

 banaslys

40 0 40 80 120 160
Meters

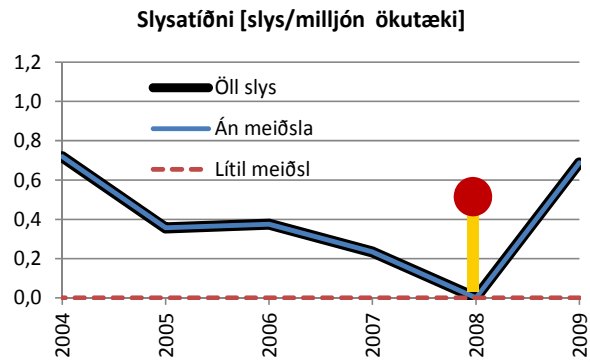
Grensásvegur – Miklabraut



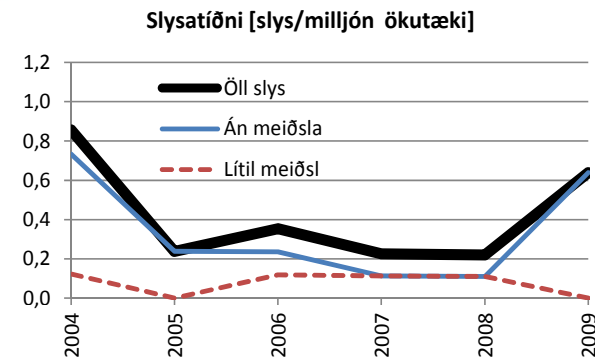
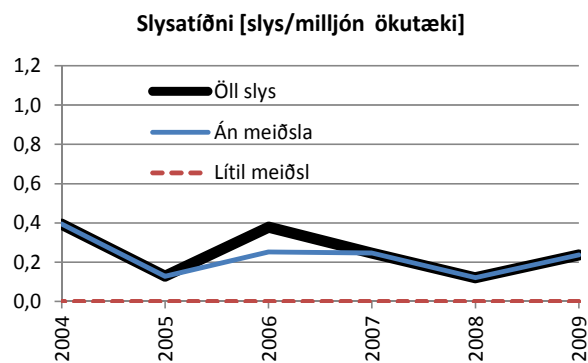
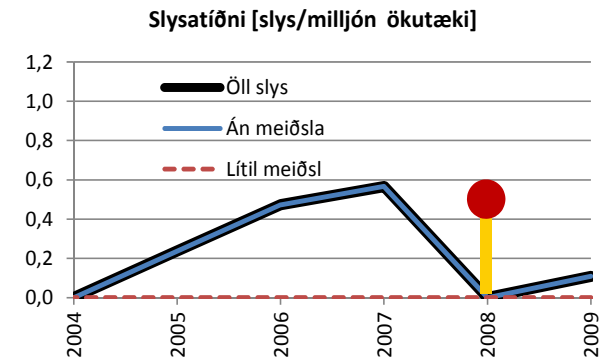
 Sérrein opnar



Háaleitisbraut – Miklabraut




Háaleitisbraut



Miklabraut

- Slysaöggn**
- ar2004
 - ar2005
 - ar2006
 - ar2007
 - ar2008
 - ar2009
 - ⊕ banaslys

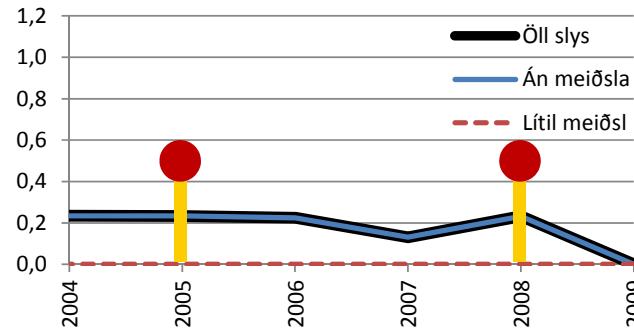
 Sérrein opnar



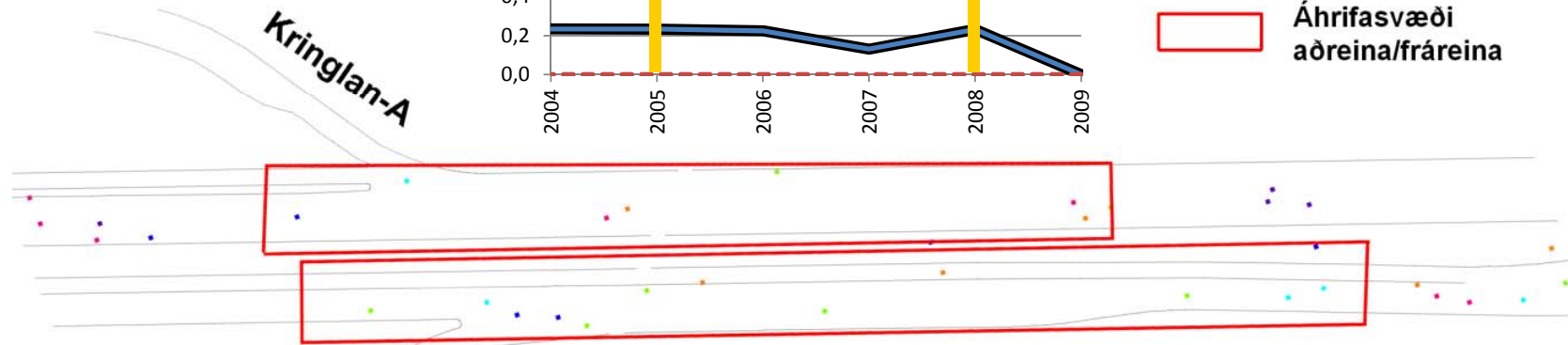
Kringlan A – Miklabraut



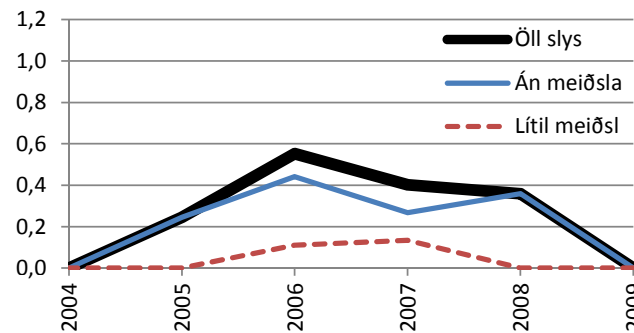
Slysáíðni [slys/milljón ökutæki]



Áhrifasvæði aðreina/fráreina



Slysáíðni [slys/milljón ökutæki]

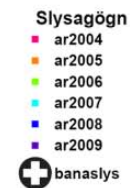
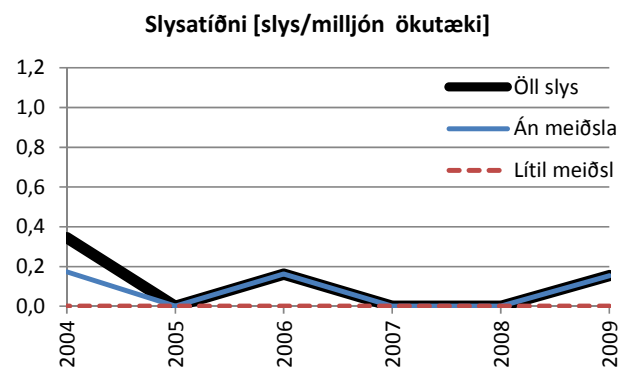
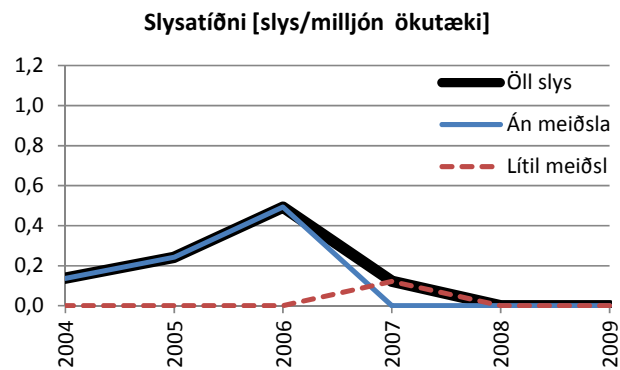
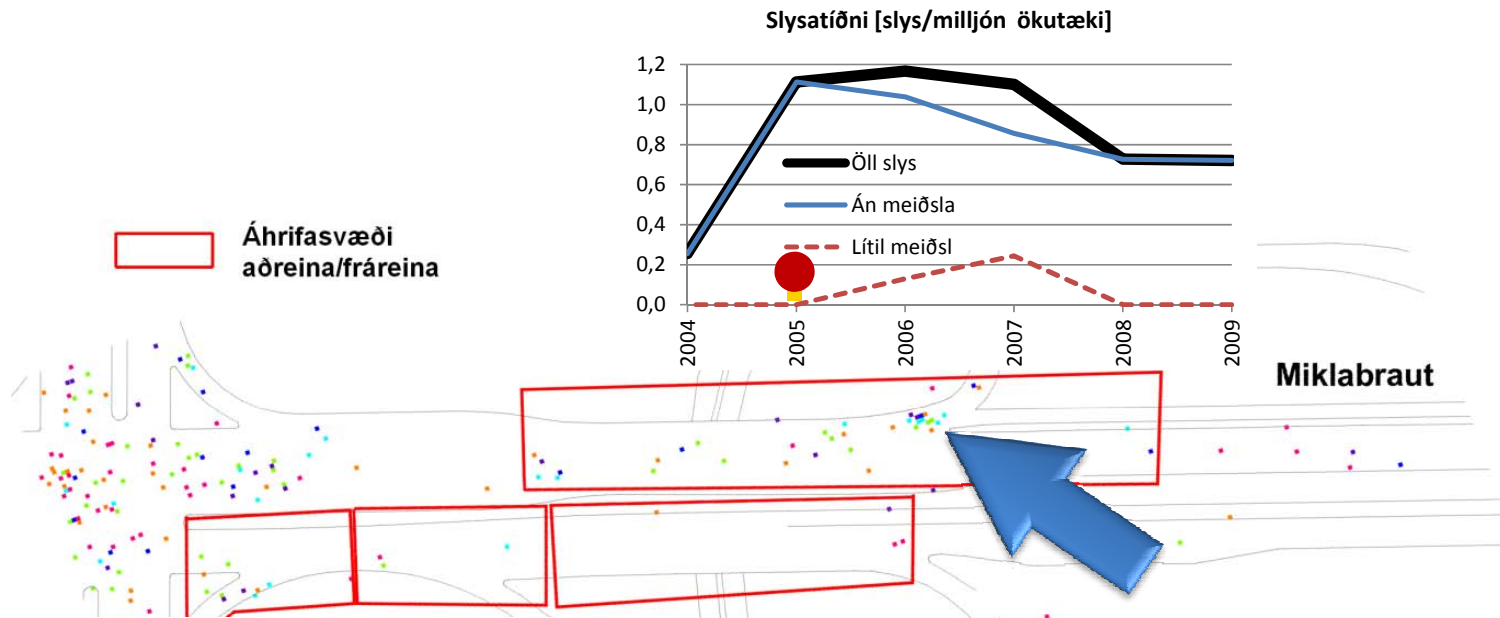


Slysaögn
 ar2004
 ar2005
 ar2006
 ar2007
 ar2008
 ar2009
 banaslys

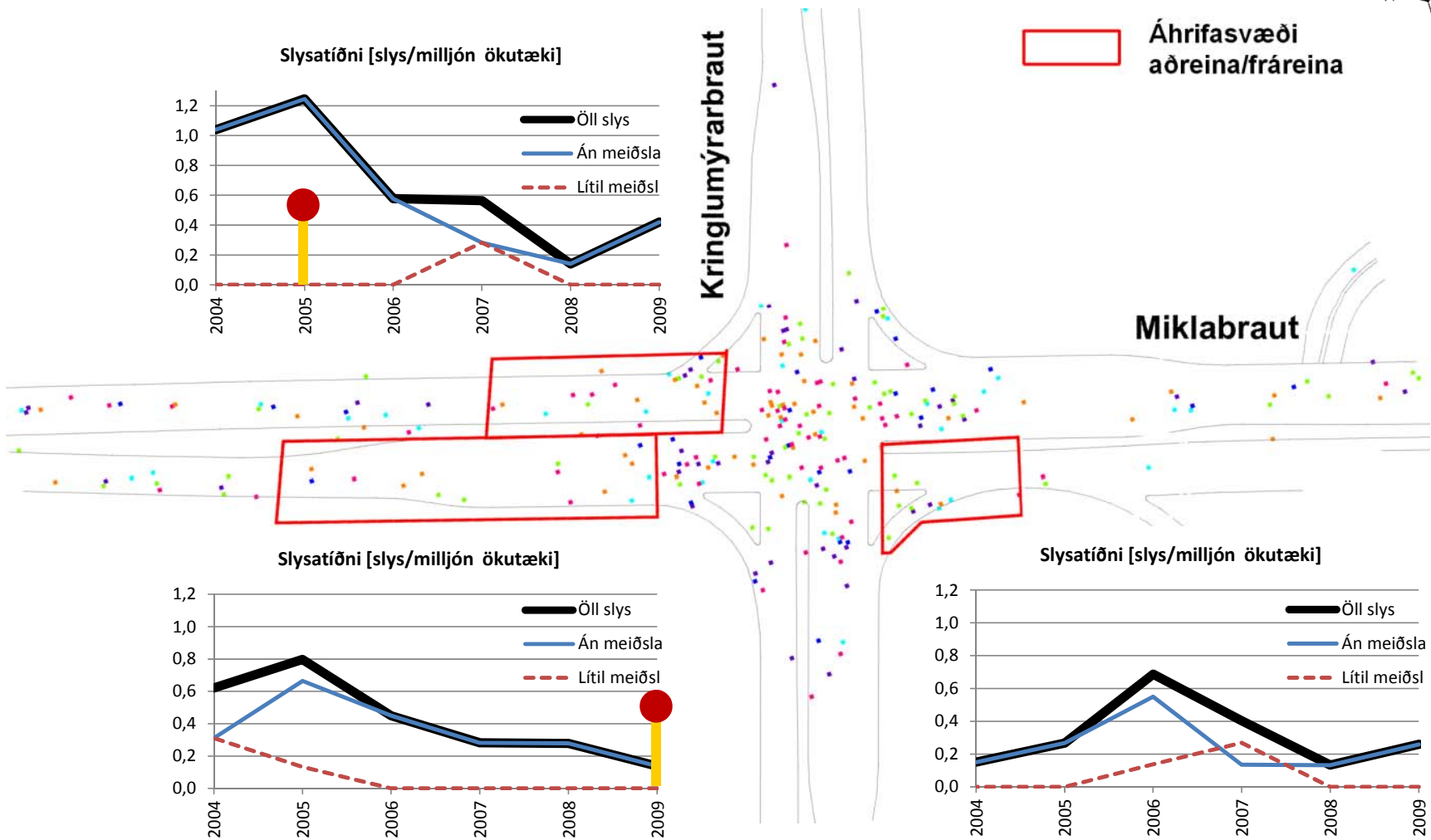
Sérrein opnar




Kringlan V – Miklabraut



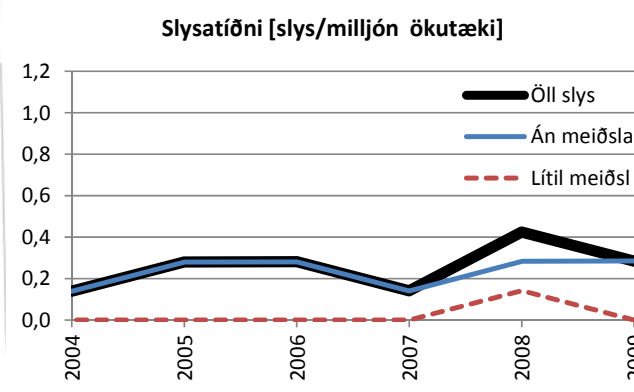
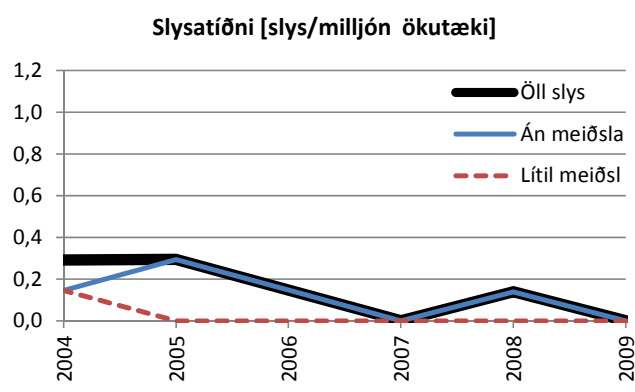
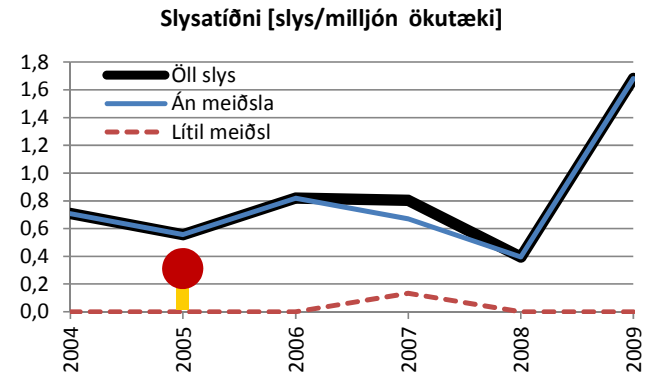
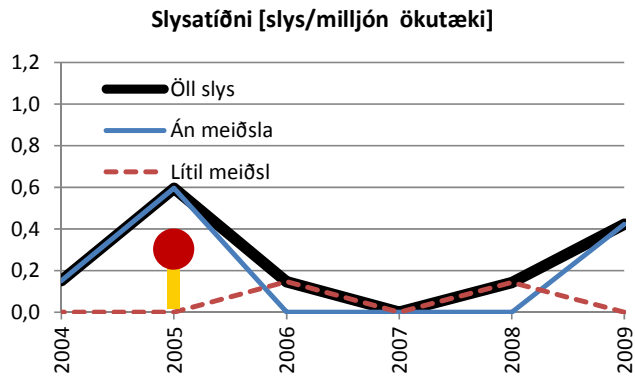
Kringlumýrarbraut – Miklabraut





 Sérreïn opnar



Stakkahlíð – Miklabraut

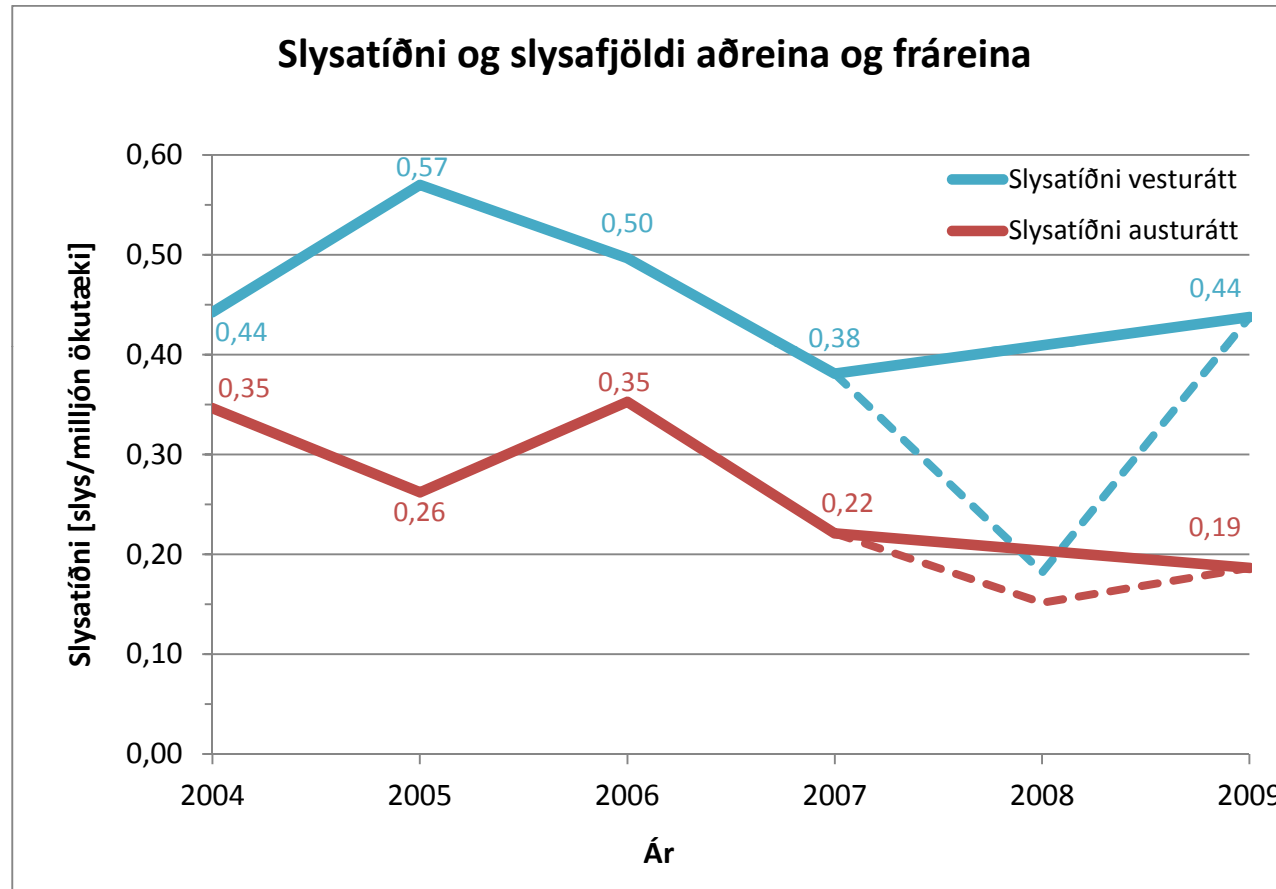


- Slysaöggn**
- ar2004
 - ar2005
 - ar2006
 - ar2007
 - ar2008
 - ar2009
-  banaslys

 Sérrein opnar



Niðurstöður



Niðurstöður – Samantekt

- Sterk vísbending um aukningu slysatíðni á aðreinum
- Ökumenn venjast breytingum
- Lítil eða engin áhrif á slysatíðni á fráreinum
- Hátt hlutfall hópbifreiða í slysum



Ráðleggingar

- Hægri beygjuljós
- Auknar sjónlengdir
- Yfirborðsbreytingar
- Fræðsla / kynning



Grensásvegur

Háaleitisbraut

Ráðleggingar

- Hægri beygjuljós
- Auknar sjónlengdir
- Yfirborðsbreytingar
- Fræðsla / kynning





Reykjavíkurborg



MANNVIT
VERKFRÆÐISTOFA



Rannsóknarráðstefna Vegagerðarinnar 2010
Þorsteinn R. Hermannsson
Grétar Þór Ævarsson