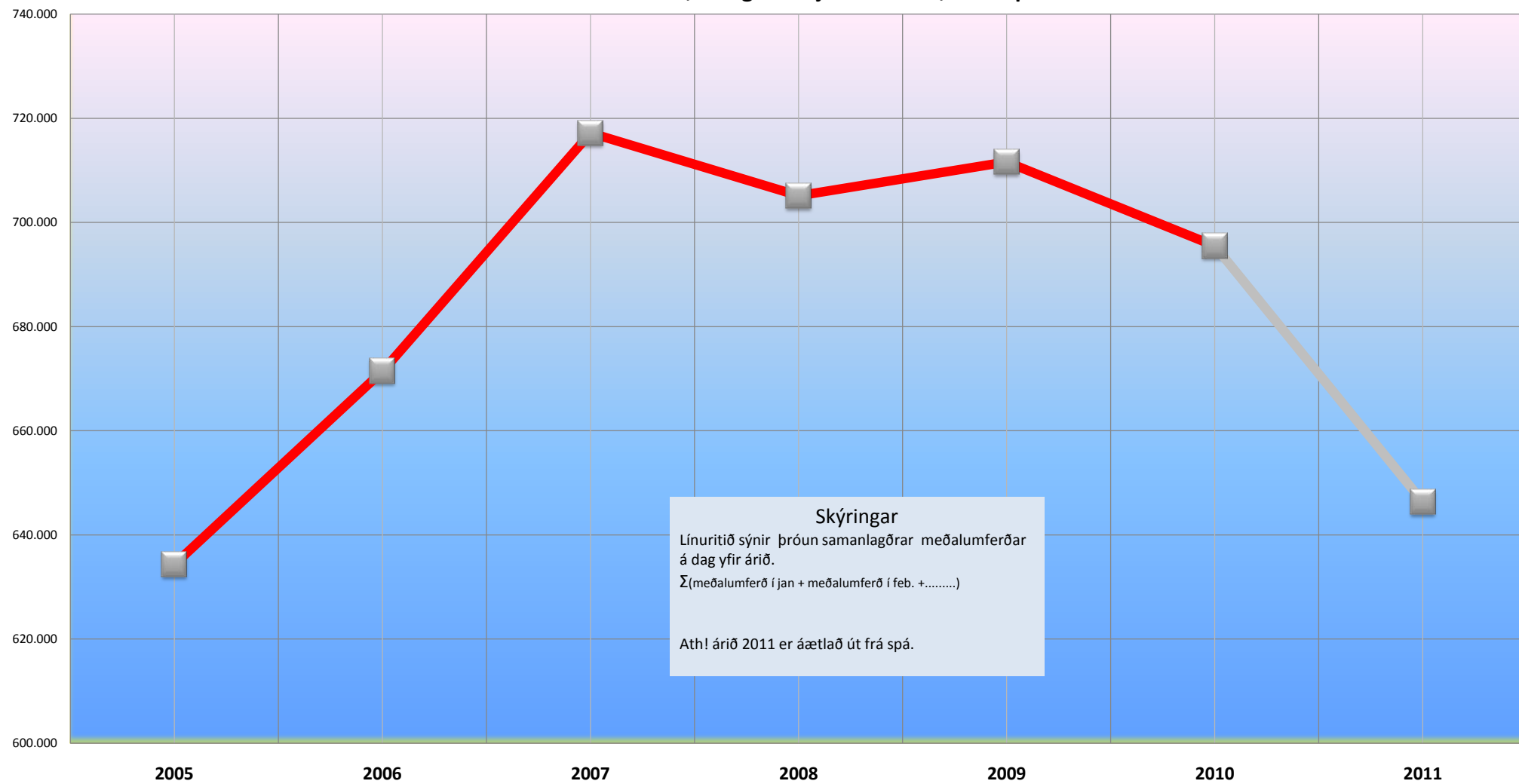


Tafla 2. Sýnir hutfallslegan mismun á milli ára í sömu mánuðum eftir talingastöðum

Ár	mån.	Vegnr.	Nöfn talingastaða																				Hútfallsleg þróun	Umferð samtals	Aktor samtals	
			Suðurland				Höfuðborgarsvæðið				Vesturland				Norurland				Austurland							
			1-b0	1-c2	1-d8	Samtals	1-e2	1-f3	Samtals	1-g8	1-h4	1-i1	Samtals	1-k7	1-p2	1-p6	1-q9	1-r4	Samtals	1-s4	1-t5	1-v2				Samtals
Mismunur milli ára	2006 og 2006	Janúar	31.0%	8.3%	20.8%	18.3%	19.3%	2.8%	6.8%	22.7%	29.5%	20.3%	24.7%	11.9%	10.8%	23.2%	8.4%	25.3%	18.5%	27.5%	3.8%	-5.5%	8.0%	3.9%	11.8%	13.4%
		Febrúar	27.5%	5.4%	17.6%	15.2%	16.8%	3.2%	6.6%	20.3%	22.6%	1.2%	18.8%	4.4%	-2.9%	9.4%	5.0%	8.4%	6.3%	15.1%	14.9%	2.0%	11.4%	4.7%	9.7%	10.7%
		Mars	-14.4%	-7.9%	7.4%	3.3%	4.0%	3.2%	3.4%	4.4%	-3.7%	-23.2%	-1.9%	23.8%	-22.7%	-9.5%	-25.0%	-10.0%	-6.0%	-15.0%	-19.7%	-22.2%	-18.8%	4.6%	0.4%	-0.7%
		Apríl	63.5%	11.1%	20.2%	19.5%	19.1%	3.1%	7.7%	18.5%	25.3%	19.4%	21.0%	17.8%	4.0%	2.3%	0.0%	-1.2%	5.2%	3.5%	-11.7%	28.2%	4.9%	5.8%	11.4%	13.3%
		Mai	7.4%	-4.5%	0.9%	0.0%	-2.5%	3.3%	1.4%	0.7%	0.1%	-13.2%	-1.3%	-14.2%	-16.2%	-11.6%	-4.7%	-5.9%	-12.1%	-1.9%	-5.5%	-2.6%	-3.5%	7.3%	-0.6%	-1.0%
		Júní	12.3%	1.4%	4.7%	4.4%	4.0%	3.4%	3.6%	8.0%	10.9%	13.7%	9.9%	11.8%	7.6%	3.6%	6.3%	3.7%	6.2%	12.6%	3.4%	-0.6%	5.3%	13.2%	5.2%	5.9%
		Júlí	-9.4%	-5.9%	0.2%	2.0%	0.1%	3.4%	2.1%	4.0%	7.1%	4.1%	5.2%	2.7%	5.0%	2.0%	2.9%	7.6%	3.2%	5.8%	-1.0%	-2.8%	0.7%	21.5%	2.1%	2.0%
		Agúst	18.5%	11.4%	10.6%	11.3%	9.0%	2.4%	4.6%	6.8%	12.5%	13.9%	10.0%	15.6%	19.9%	14.8%	22.4%	3.7%	15.7%	19.6%	11.8%	28.3%	19.7%	19.8%	8.5%	9.9%
		Septembar	8.0%	5.3%	13.5%	11.5%	12.3%	4.6%	7.0%	11.0%	17.6%	7.3%	13.0%	9.6%	13.6%	12.3%	37.8%	3.7%	13.1%	25.6%	11.9%	18.2%	18.1%	9.3%	9.6%	10.0%
		Oktober	17.8%	11.9%	15.7%	15.0%	7.1%	9.6%	8.8%	13.9%	21.6%	13.9%	16.6%	18.4%	16.4%	16.2%	28.6%	23.1%	17.6%	21.3%	3.4%	19.1%	13.0%	6.3%	11.9%	13.5%
		Novembar	2.8%	-2.1%	4.4%	3.0%	10.0%	0.5%	2.3%	-1.5%	-3.7%	-8.4%	-3.0%	-7.8%	-6.3%	-2.5%	0.5%	-8.3%	-4.0%	-5.3%	-1.7%	-1.7%	-2.8%	4.8%	0.9%	0.4%
		Desembar	2.7%	1.5%	5.5%	4.7%	8.5%	1.3%	3.2%	5.4%	-4.6%	3.3%	1.4%	3.7%	4.7%	1.2%	16.2%	5.0%	3.1%	1.2%	0.7%	-1.0%	0.4%	4.3%	3.0%	3.0%
		Samtals	9.2%	2.4%	9.0%	7.6%	7.9%	3.3%	4.7%	8.6%	10.3%	4.6%	8.7%	4.8%	4.0%	4.6%	8.4%	3.7%	4.8%	9.8%	1.8%	6.3%	5.8%	5.8%	6.4%	6.4%
		Janúar	6.6%	0.8%	10.6%	8.5%	2.7%	5.0%	4.4%	8.3%	7.9%	3.4%	7.6%	3.3%	3.1%	-3.9%	8.9%	7.3%	-0.7%	6.0%	-3.6%	14.0%	4.1%	4.1%	5.1%	6.1%
		Febrúar	-2.6%	0.6%	8.0%	6.2%	4.0%	6.4%	5.7%	8.9%	4.8%	12.9%	7.9%	7.8%	12.6%	4.0%	11.0%	8.5%	6.5%	-11.0%	-4.2%	-2.1%	-6.1%	4.4%	6.1%	6.5%
		Mars	4.3%	-0.2%	-1.4%	-1.0%	-1.9%	0.8%	0.1%	3.8%	-1.8%	4.4%	1.9%	1.8%	5.5%	5.8%	10.7%	6.6%	5.3%	17.2%	-8.1%	16.1%	8.2%	5.0%	0.7%	0.7%
		Apríl	0.3%	7.4%	4.5%	4.9%	4.7%	8.2%	7.1%	12.9%	7.1%	11.1%	10.6%	12.9%	20.2%	15.3%	24.6%	26.2%	16.5%	19.3%	47.7%	-1.2%	21.0%	7.0%	8.3%	8.3%
		Mai	16.8%	14.3%	3.0%	10.6%	10.4%	7.7%	8.6%	16.6%	11.9%	17.2%	14.9%	16.9%	19.7%	12.7%	17.4%	19.2%	15.2%	15.9%	22.5%	1.6%	6.5%	7.8%	10.5%	10.4%
		Júní	6.4%	10.8%	6.9%	7.7%	7.4%	8.2%	7.9%	8.5%	3.6%	-6.0%	4.6%	-5.0%	-1.2%	4.8%	5.3%	2.7%	1.4%	1.9%	-2.3%	9.6%	2.7%	13.5%	6.4%	5.6%
		Júlí	7.5%	8.5%	7.8%	7.5%	9.4%	9.7%	8.6%	10.4%	8.9%	-4.9%	7.6%	-1.8%	-3.1%	-0.8%	-1.6%	-6.8%	-2.0%	-5.3%	-20.2%	-0.7%	-8.6%	18.6%	6.8%	6.8%
		Agúst	4.1%	7.0%	6.7%	6.6%	8.3%	11.3%	10.3%	9.7%	8.0%	-4.3%	7.0%	-4.3%	-3.2%	0.6%	6.3%	-3.0%	-4.1%	-1.9%	-1.5%	-2.2%	-5.2%	18.8%	7.0%	5.7%
		Septembar	-1.9%	1.2%	-1.5%	-1.0%	0.6%	9.6%	6.6%	4.6%	3.1%	0.2%	3.5%	1.8%	1.9%	3.8%	-10.0%	-3.4%	1.7%	-6.5%	-16.6%	-2.2%	-8.7%	8.5%	4.2%	2.8%
		Oktober	-4.3%	0.4%	-0.6%	0.4%	13.8%	8.7%	10.1%	5.2%	2.8%	-2.8%	3.4%	-3.6%	1.4%	7.4%	-3.2%	-2.8%	3.8%	-1.7%	-9.4%	-3.2%	-5.2%	6.0%	6.7%	4.7%
		Novembar	1.4%	14.6%	11.3%	11.6%	15.3%	16.4%	10.1%	18.1%	17.1%	14.9%	17.4%	14.3%	10.3%	15.5%	16.3%	17.4%	14.5%	12.9%	-7.6%	0.9%	1.0%	4.8%	15.4%	14.6%
		Desembar	-9.2%	-1.6%	1.6%	0.6%	5.9%	7.9%	7.4%	1.0%	-4.6%	-3.2%	-1.4%	-2.3%	-3.0%	5.3%	-2.3%	-4.0%	2.0%	-3.8%	1.5%	-5.9%	-2.5%	4.1%	4.4%	3.0%
		Samtals	4.0%	5.8%	5.3%	5.4%	6.9%	8.4%	7.9%	9.1%	6.0%	1.5%	7.0%	1.6%	3.2%	5.2%	3.3%	1.2%	3.8%	1.2%	-7.2%	1.5%	-1.7%	6.8%	6.2%	
		Janúar	-11.1%	-0.6%	-8.2%	-6.8%	8.1%	6.8%	7.1%	3.2%	-1.9%	-2.2%	0.8%	-1.0%	-0.8%	10.3%	-8.7%	-14.5%	4.7%	-14.6%	-9.1%	-14.3%	-12.5%	3.6%	3.8%	1.1%
		Febrúar	3.7%	-2.8%	-12.4%	-10.2%	-1.4%	3.3%	2.0%	-2.9%	-3.7%	-11.1%	-4.3%	-8.9%	-8.9%	-12.9%	-16.4%	-5.0%	-1.5%	-27.7%	-16.8%	-16.8%	-16.8%	3.7%	-1.6%	-3.8%
		Mars	23.1%	9.8%	13.5%	13.1%	18.8%	5.3%	9.1%	10.1%	15.8%	23.2%	13.5%	24.3%	20.7%	1.4%	33.1%	4.8%	10.6%	-6.8%	-29.7%	-4.0%	-13.4%	4.3%	10.4%	11.3%
		Apríl	-25.1%	-7.7%	-7.6%	-8.3%	-0.7%	7.1%	4.7%	-7.7%	-13.2%	-24.1%	-11.7%	-25.6%	-21.6%	-8.4%	-19.2%	-15.6%	-24.3%	-46.2%	-30.1%	-34.1%	4.6%	-2.7%	-5.8%	
		Mai	-16.4%	-1.9%	-0.2%	-1.3%	2.7%	2.4%	2.5%	-2.5%	-5.0%	-0.9%	-3.6%	0.0%	-0.7%	3.4%	17.7%	-2.8%	2.8%	-4.2%	-14.2%	-9.1%	-9.1%	1.7%	0.7%	0.0%
		Júní	-7.4%	1.5%	1.6%	1.1%	-0.6%	-2.3%	-1.7%	-4.2%	-6.8%	-9.4%	-5.8%	-7.5%	-8.2%	-7.3%	-6.4%	-11.2%	-7.9%	-11.5%	-16.6%	-12.4%	-14.1%	11.6%	-2.9%	-3.0%
		Júlí	-3.1%	7.8%	-6.4%	-2.3%	-2.3%	-2.2%	-2.2%	-4.2%	0.9%	-4.2%	-1.1%	-0.9%	-0.7%	3.3%	3.4%	-0.1%	1.9%	1.7%	1.9%	0.5%	1.4%	13.9%	-2.4%	-2.7%
		Agúst	-4.0%	-1.9%	-3.4%	-3.1%	-3.4%	-0.4%	-1.4%	-0.3%	-1.0%	-5.7%	-1.3%	-4.3%	-5.9%	-3.3%	-0.6%	0.2%	-3.5%	-6.6%	-8.4%	-9.4%	-8.0%	17.3%	-2.0%	-2.4%
		Septembar	-0.9%	1.1%	-5.1%	-3.6%	-2.2%	-1.1%	-1.4%	-5.2%	-8.0%	-3.6%	-6.1%	-5.0%	-6.4%	-0.2%	5.2%	0.7%	-1.7%	-2.7%	-5.9%	-2.7%	-1.9%	8.4%	-2.6%	-3.3%
		Oktober	-3.1%	-2.0%	-10.5%	-8.5%	-15.0%	-2.4%	-6.1%	-10.1%	-12.3%	-14.5%	-11.4%	-12.1%	-14.5%	-17.6%	-21.8%	-16.1%	-16.6%	-18.7%	-16.1%	-18.3%	-15.0%	-9.1%	-8.3%	-8.7%
		Novembar	-1.8%	-1.1%	-5.4%	-4.4%	-14.8%	-3.7%	8.6%	-6.8%	-10.0%	-7.4%	-9.2%	-4.2%	-7.4%	-10.6%	-15.6%	-7.6%	-13.6%	-14.6%	-13.6%	-14.6%	-14.6%	4.4%	-6.7%	-6.2%
		Desembar	-0.6%	4.9%	-4.0%	-2.2%	-9.6%	0.0%	-2.5%	-2.0%	-0.5%	-3.2%	-1.6%	-1.7%	-3.8%	-3.9%	-2.3%	-3.3%	-3.4%	-0.8%	-27.0%	-11.6%	-13.7%	3.6%	-2.5%	-2.4%
		Samtals	-5.0%	0.8%	-3.9%	-3.0%	-2.0%	0.9%	0.0%	-3.0%	-4.8%	-5.6%	-4.0%	-4.8%	-5.3%	-3.3%	-1.3%	-5.2%	-3.9%	-6.6%	-14.2%	-8.8%	-8.8%	-1.7%	-2.4%	
		Janúar	2.8%	12.1%	9.8%	10.1%	-2.4%	2.2%	0.9%	0.9%	1.8%	1.4%	1.2%	1.5%	3.6%	-6.4%	-1.7%	-4.0%	-3.3%	-1.9%	-29.2%	-8.3%	-14.2%	3.1%	1.7%	3.0%
		Febrúar	-15.2%	9.2%	8.2%	7.7%	0.0%	-0.7%	0.4%	0.1%	2.5%	8.6%	1.8%	10.7%	10.2%	-4.8%	6.4%	-2.6%	0.7%	1.7%	-6.3%	-3.6%	-2.5%	3.6%	1.1%	2.6%
		Mars	-26.5%	-1.3%	-13.1%	-11.3%	-18.6%	2.4%	-4.0%	-12.5%	-16.0%	-24.7%	-15.1%	-22.4%	-18.6%	-10.9%	-31.6%	-19.1%	-16.3%	-14.8%	-4.1%	-27.4%	-16.0%	3.6%	-8.2%	-9.8%
		Apríl	42.5%	16.6%	4.5%	8.1%	-4.7%	-1.2%	-2.2%	4.3%	13.0%	29.6%	10.1%	32.5%	28.6%	6.2%	24.5%	31.0%	16.3%	32.7%	7.5%	48.3%	29.6%	5.9%	3.1%	5.9%
		Mai	14.4%	7.8%	-0.2%	2.0%	-7.9%	-2.8%	-4.4%	-0.7%	5.6%	-3.5%	2.0%	6.4%	7.7%	0.3%	-2.2%	16.2%	3.1%	21.3%	-3.0%	11.7%	10.5%	7.8%	-1.8%	-0.1%
		Júní	23.3%	8.5%	-0.1%	3.0%	-5.5%	1.0%	1.2%	4.0%	8.4%	10.9%	6.8%	13.9%	14.2%	7.4%	25.7%	25.2%	12.7%	26.7%	17.0%	30.1%	24.8%	14.5%	2.8%	-4.2%
		Júlí	22.7%	11.3%	9.2%	10.7%	-2.1%	3.8%	1.8%	5.2%	7.3%	7.6%	6.4%	10.4%	9.6%	7.7%	12.6%	11.5%	9.4%	11.7%	7.0%	18.1%	12.2%	22.4%	5.4%	7.0%
		Agúst	10.9%	10.7%	1.9%	4.6%	-2.8%	6.7%	3.6%	-1.7%	-0.5%	3.9%	-0.5%	7.7%	8.1%	6.1%	14.7%	15.4%	8.3%	14.6%	12.2%	18.1%	15.1%	19.9%	3.7%	4.2%
		Septembar	9.8%	0.9%	-2.4%	-1.1%	-11.2%	2.4%	-1.7%	-0.8%	-0.2%	5.3%	0.1%	6.4%	6.9%	-5.7%	11.9%	14.8%	0.8%	14.8%	11.7%	13.9%	13.5%			

Fjöldi bíla

Heildar meðalumferðar, á dag í hverjum mánuði, í mælipunktum.



Skýringar

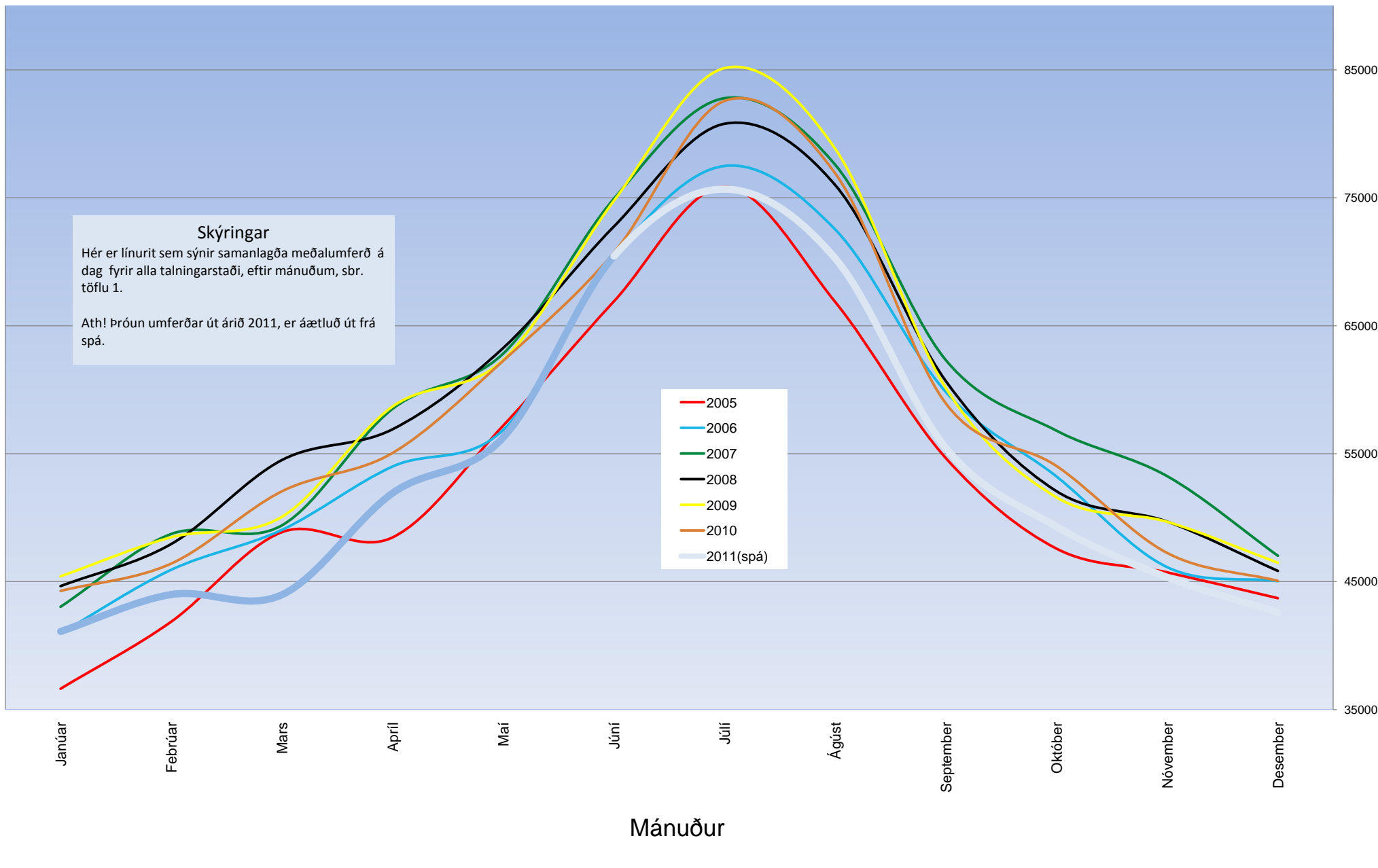
Línuritið sýnir þróun samanlagðrar meðalumferðar á dag yfir árið.

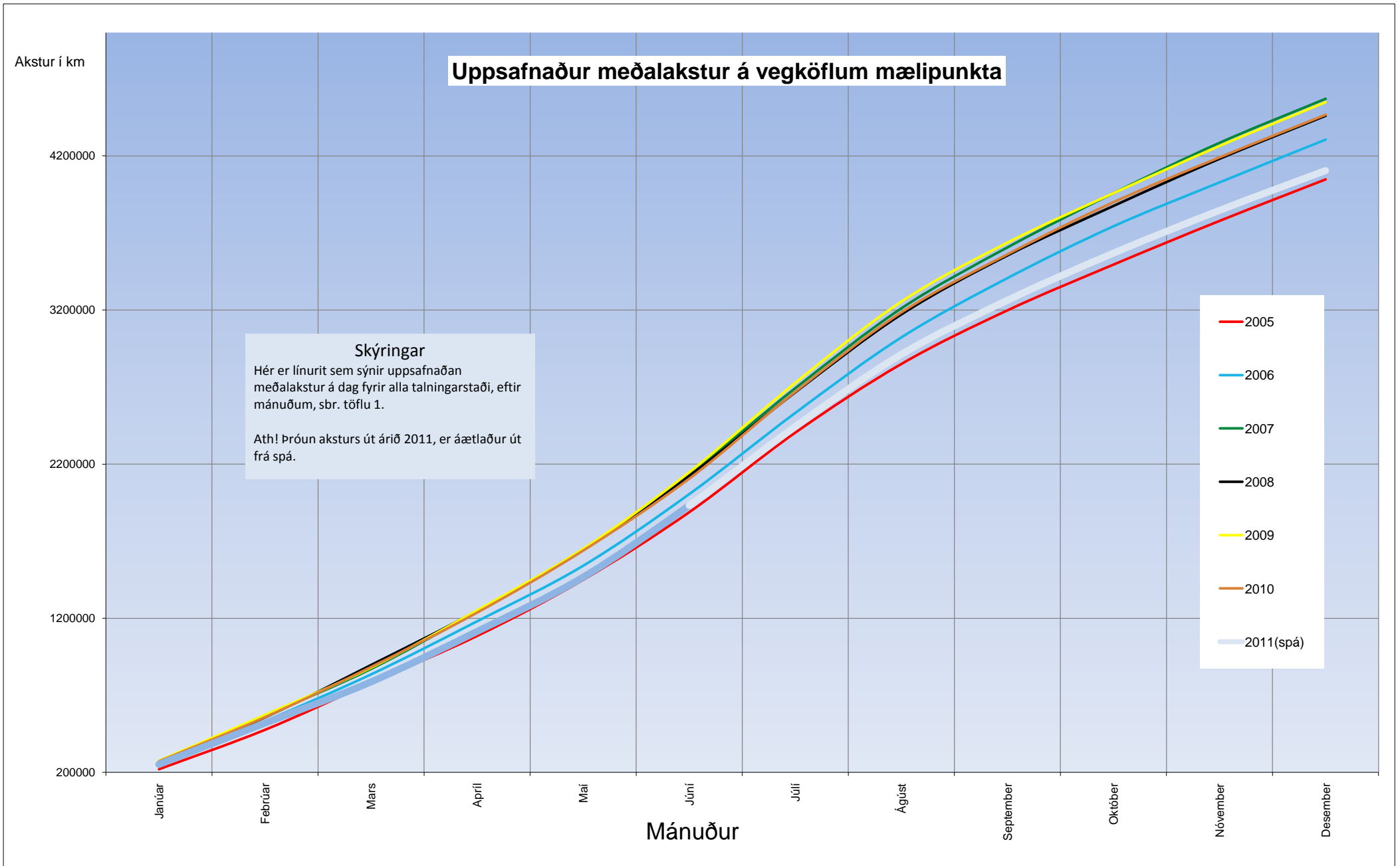
$\Sigma(\text{meðalumferð í jan} + \text{meðalumferð í feb.} + \dots)$

Ath! árið 2011 er áætlað út frá spá.

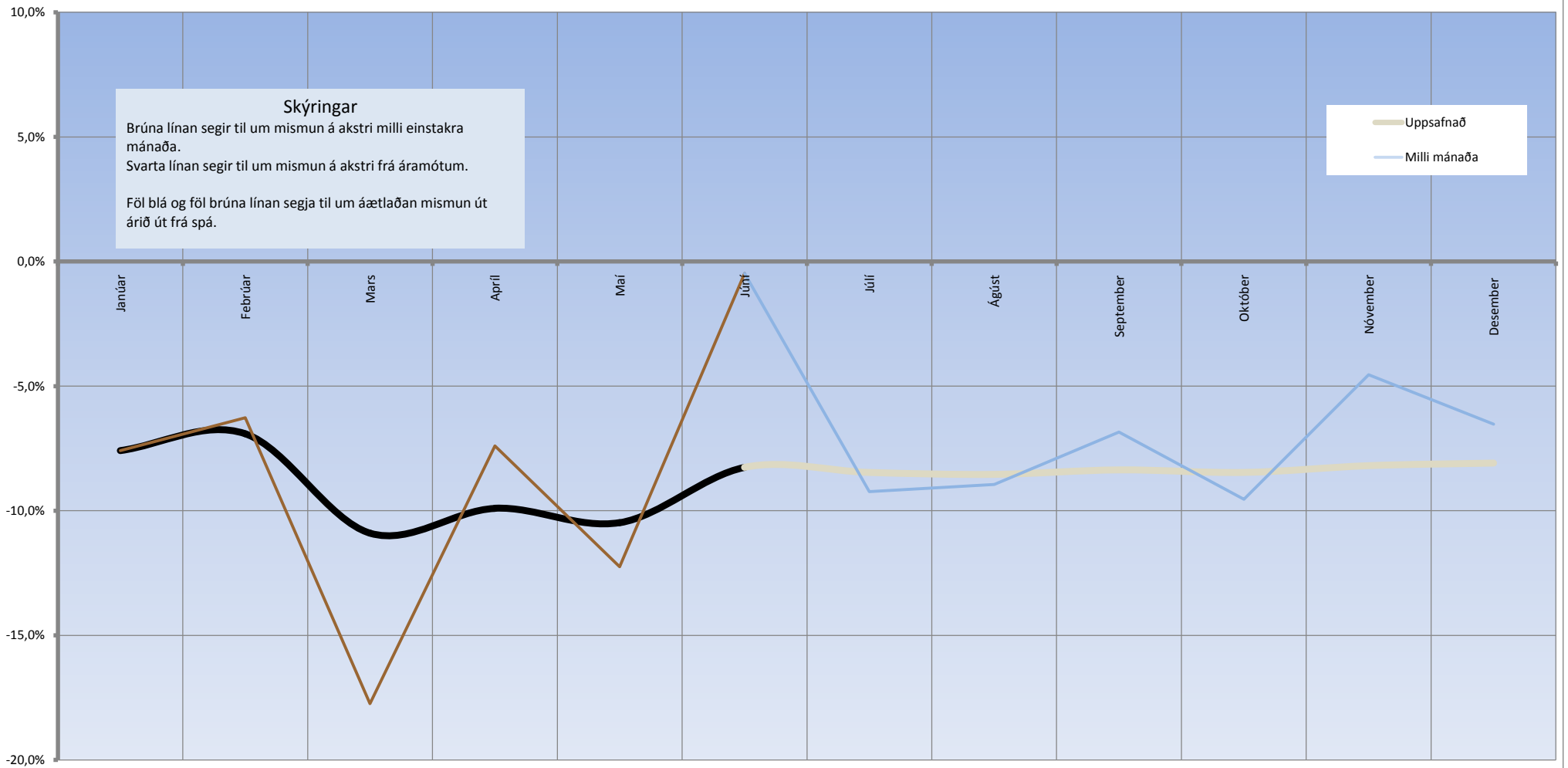
Samanlögð meðalumferð, í mælipunktum, á dag.

Fjöldi bíla





Mismunur á akstri milli árána 2010 og 2011



Hlutfallsleg þróun aksturs innan hvers svæðis 2010

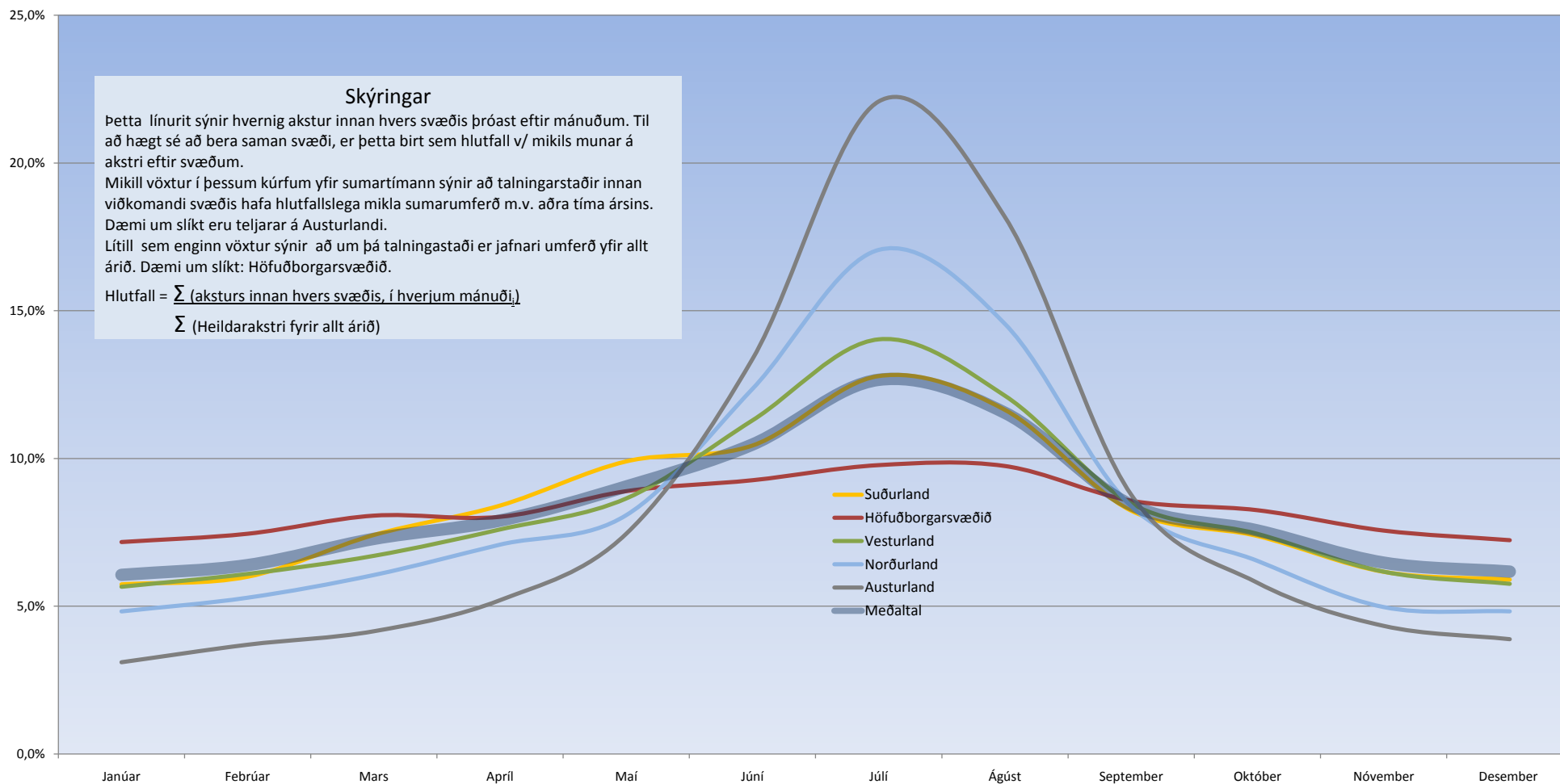
Skýringar

Þetta línurit sýnir hvernig akstur innan hvers svæðis þróast eftir mánuðum. Til að hægt sé að bera saman svæði, er þetta birt sem hlutfall v/ mikils munar á akstri eftir svæðum.

Mikill vöxtur í þessum kúrfum yfir sumartímann sýnir að talningarstaðir innan viðkomandi svæðis hafa hlutfallslega mikla sumarumferð m.v. aðra tíma ársins. Dæmi um slíkt eru teljarar á Austurlandi.

Lítill sem enginn vöxtur sýnir að um þá talningastaði er jafnari umferð yfir allt árið. Dæmi um slíkt: Höfuðborgarsvæðið.

$$\text{Hlutfall} = \frac{\sum (\text{aksturs innan hvers svæðis, í hverjum mánuði}_i)}{\sum (\text{Heildarakstri fyrir allt árið})}$$



Innbyrðis vægi talningastaðanna 16 um svæðin árið 2010
(skv. töflu 1)

